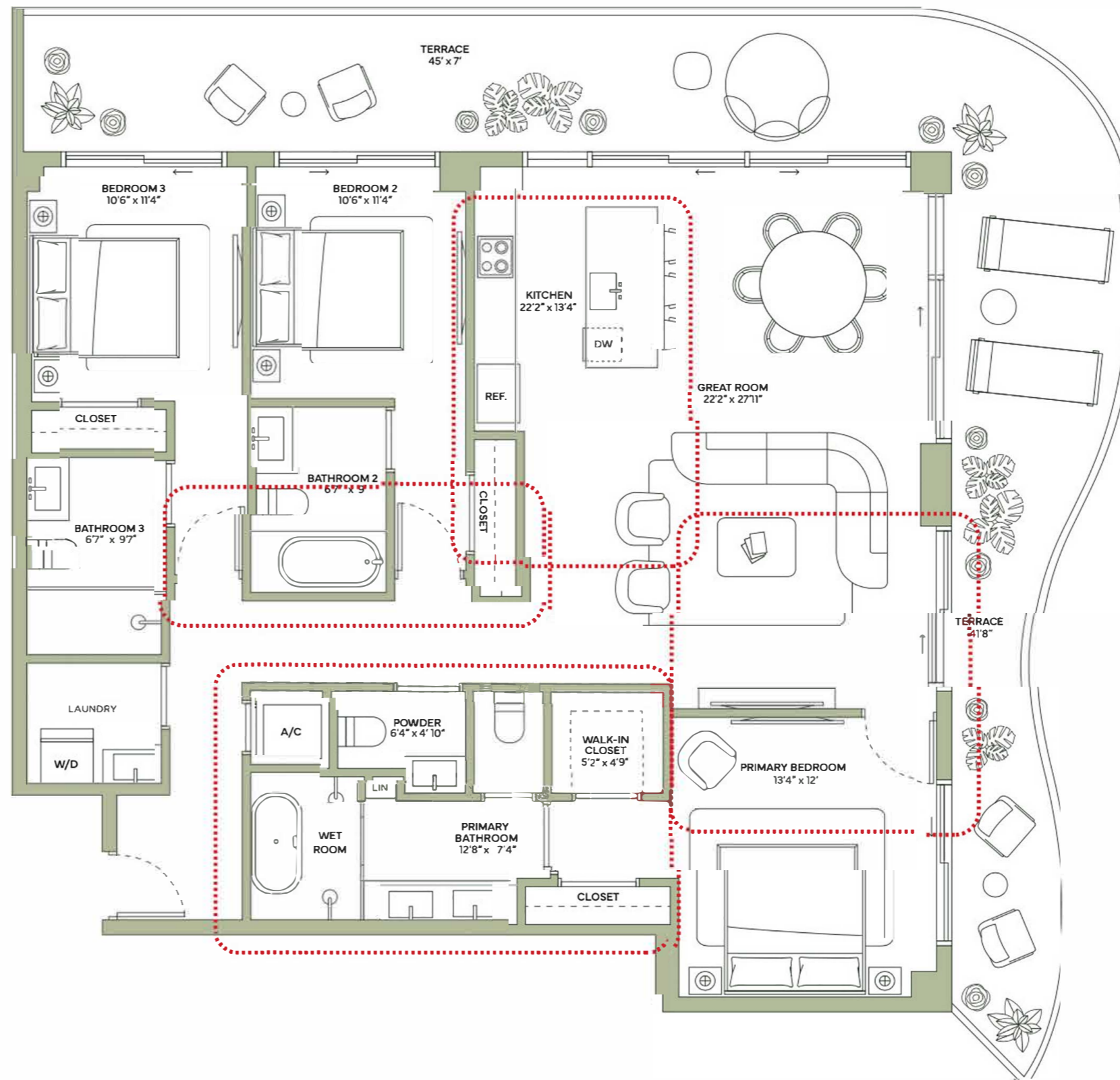
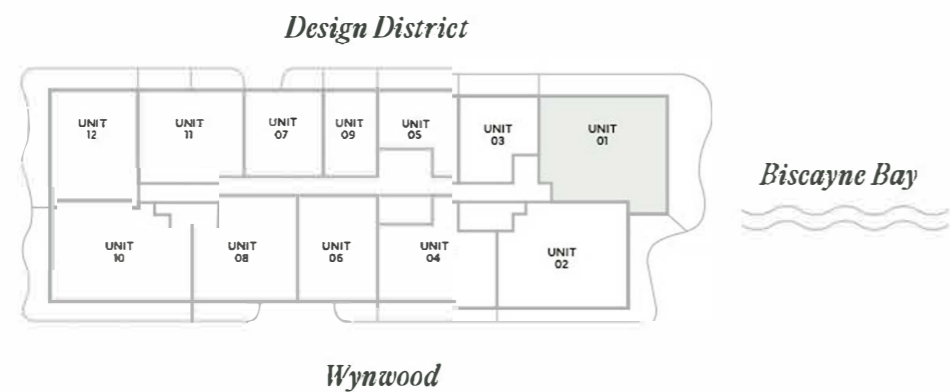


Residence 01

3 BEDROOMS | 3.5 BATHROOMS

TOTAL	2,360 SQ FT 220 SQ M
INTERIOR	1730 SQ FT 161 SQ M
EXTERIOR	630 SQ FT 59 SQ M

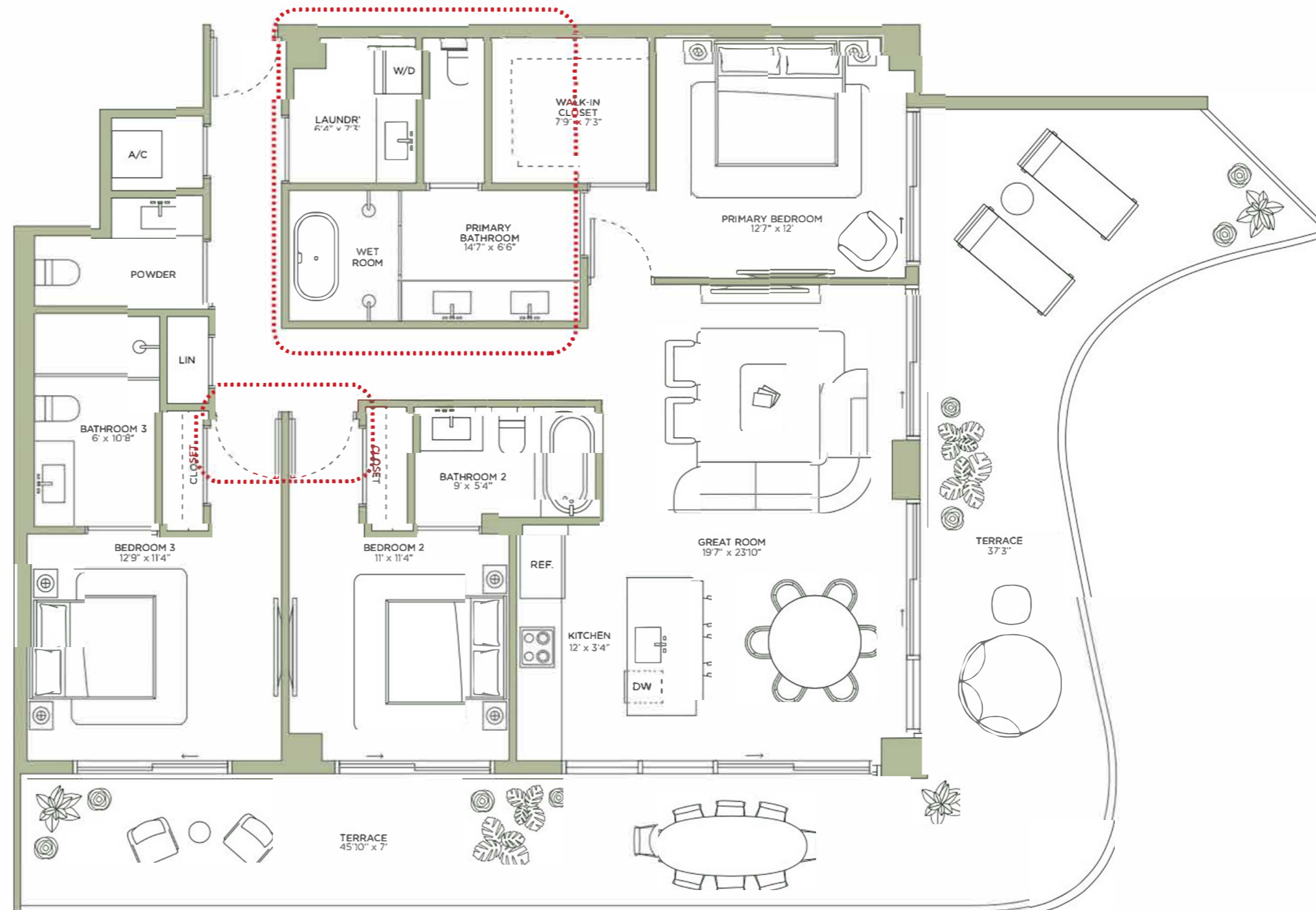
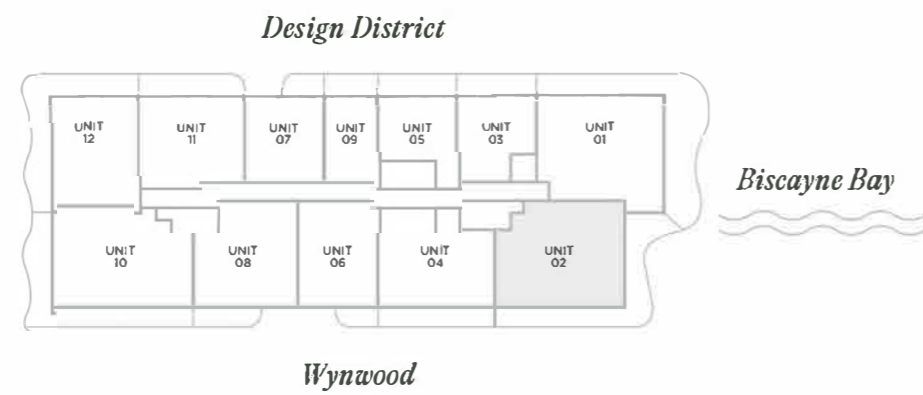


MIDTOWN PARK

Residence 02

3 BEDROOMS | 3.5 BATHROOMS

TOTAL	2337 SQ FT 217 SQ M
INTERIOR	1616 SQ FT 150 SQ M
EXTERIOR	721 SQ FT 67 SQ M

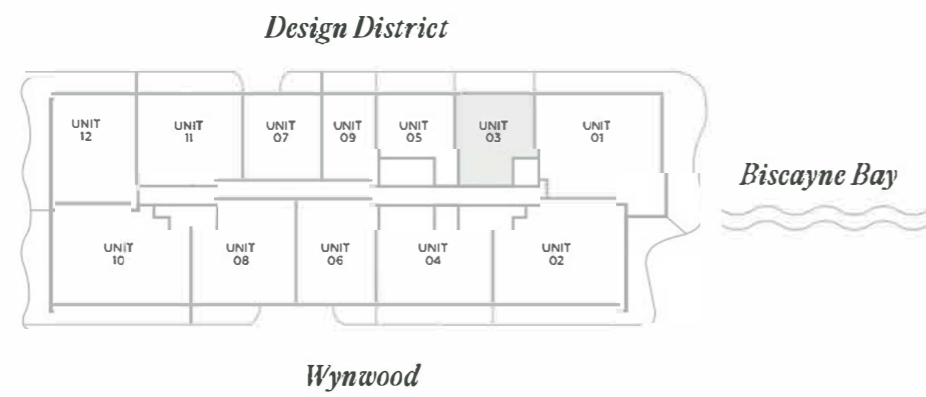


MIDTOWN PARK

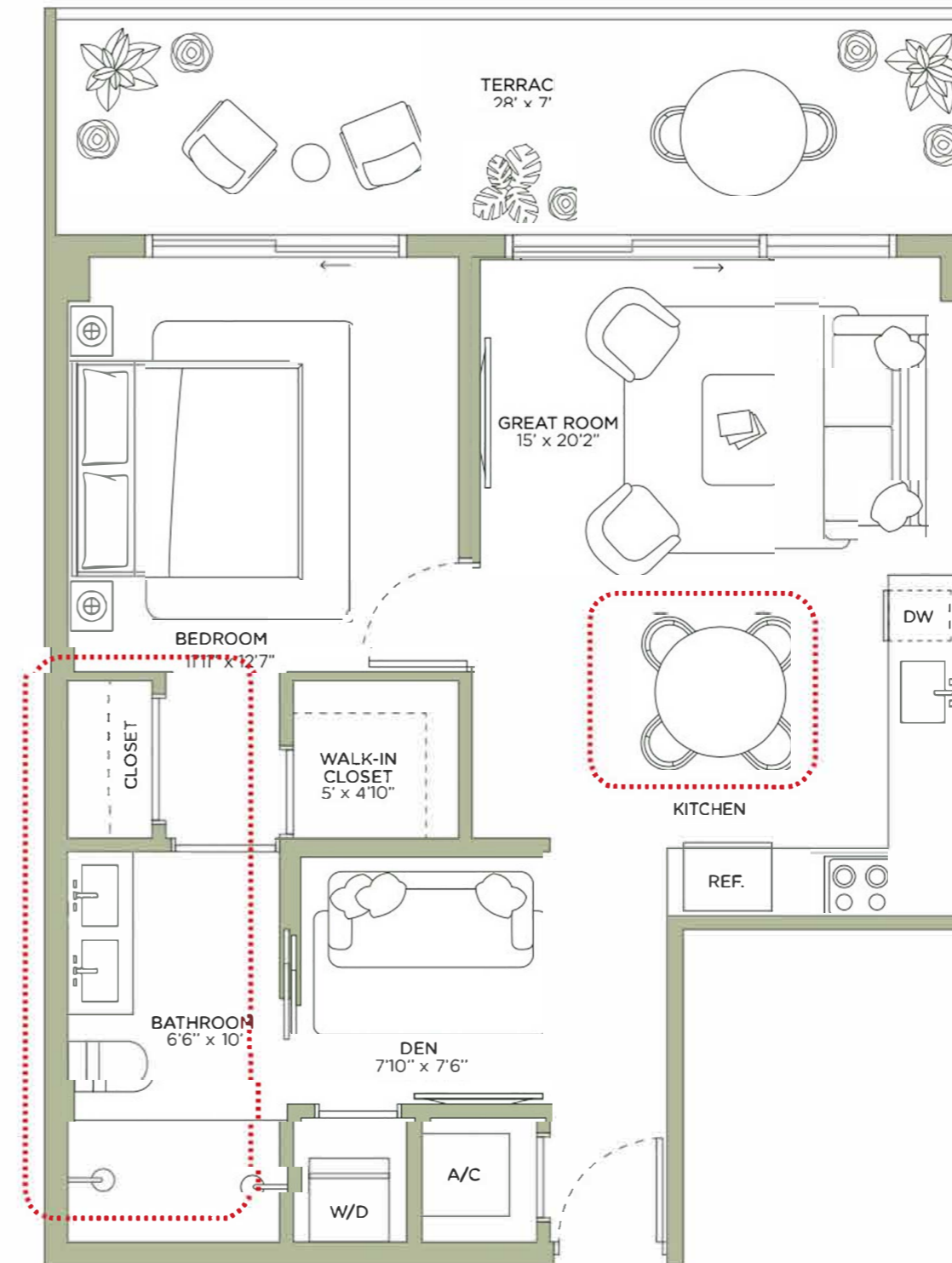
Residence 03

1 BEDROOM + DEN | 1 BATHROOM

TOTAL	998 SQ FT 91 SQ M
INTERIOR	782 SQ FT 73 SQ M
EXTERIOR	196 SQ FT 18 SQ M



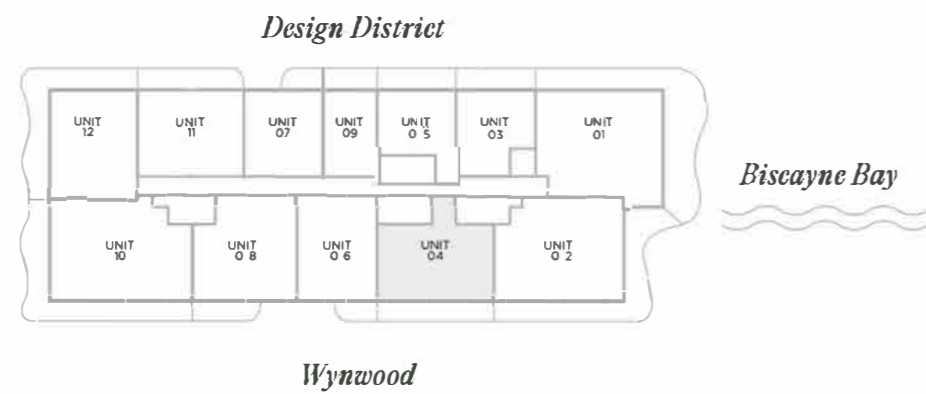
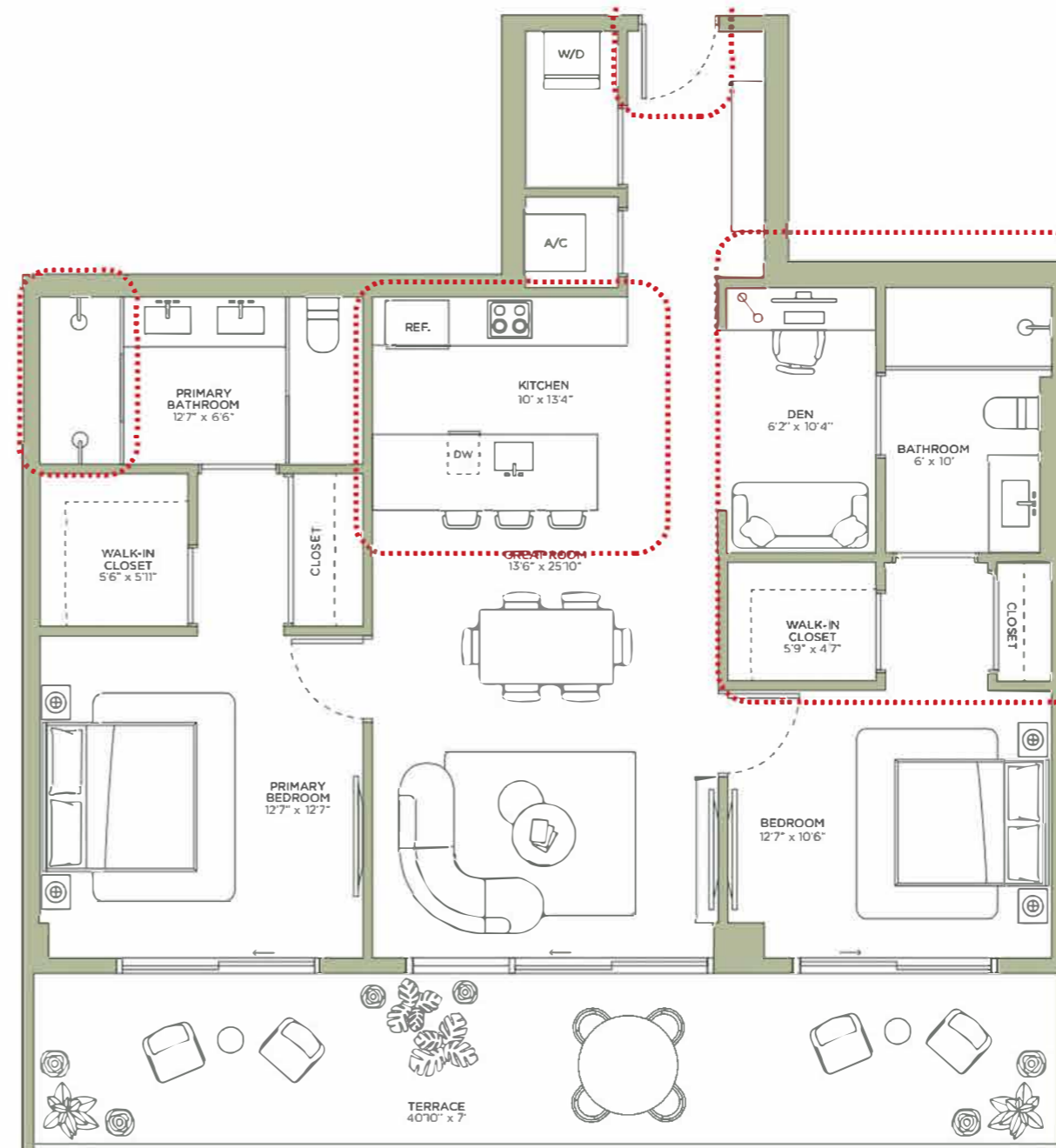
MIDTOWN PARK



Residence 04

2 BEDROOMS + DEN | 2 BATHROOMS

TOTAL	1,454 SQ FT 136 SQ M
INTERIOR	1,168 SQ FT 109 SQ M
EXTERIOR	286 SQ FT 27 SQ M

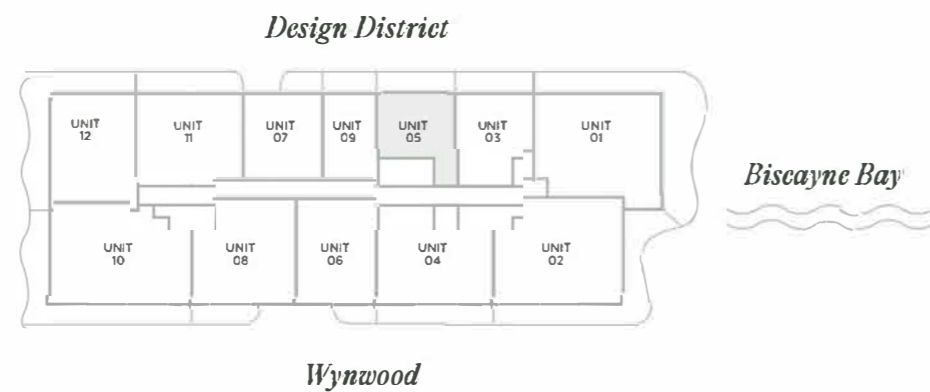


MIDTOWN PARK

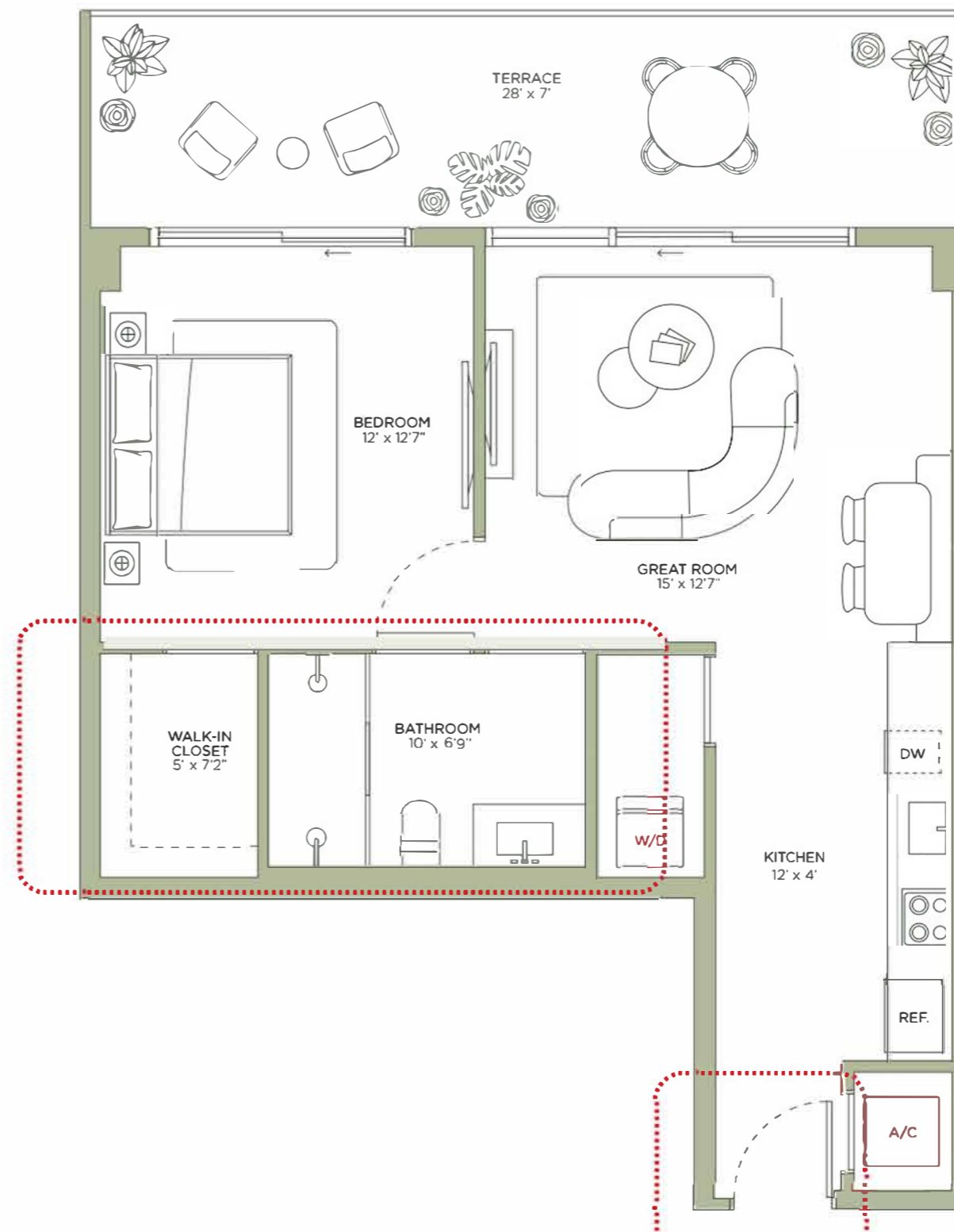
Residence 05

1 BEDROOM | 1 BATHROOM

TOTAL	866 SQ FT 80 SQ M
INTERIOR	670 SQ FT 62 SQ M
EXTERIOR	196 SQ FT 18 SQ M



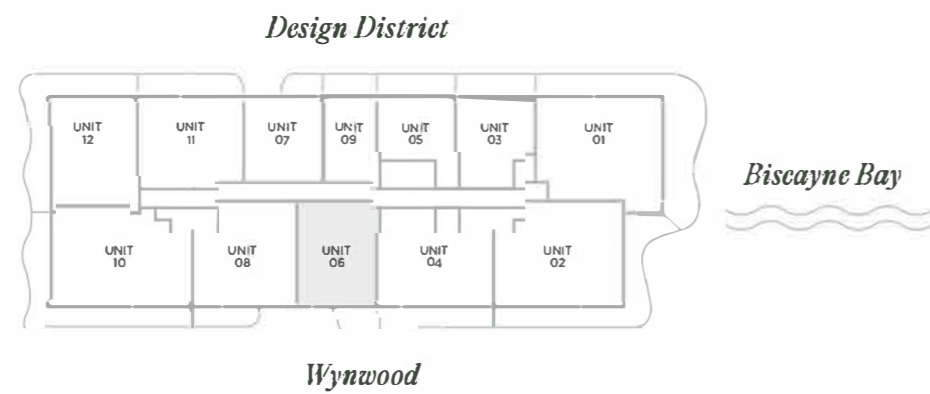
MIDTOWN PARK



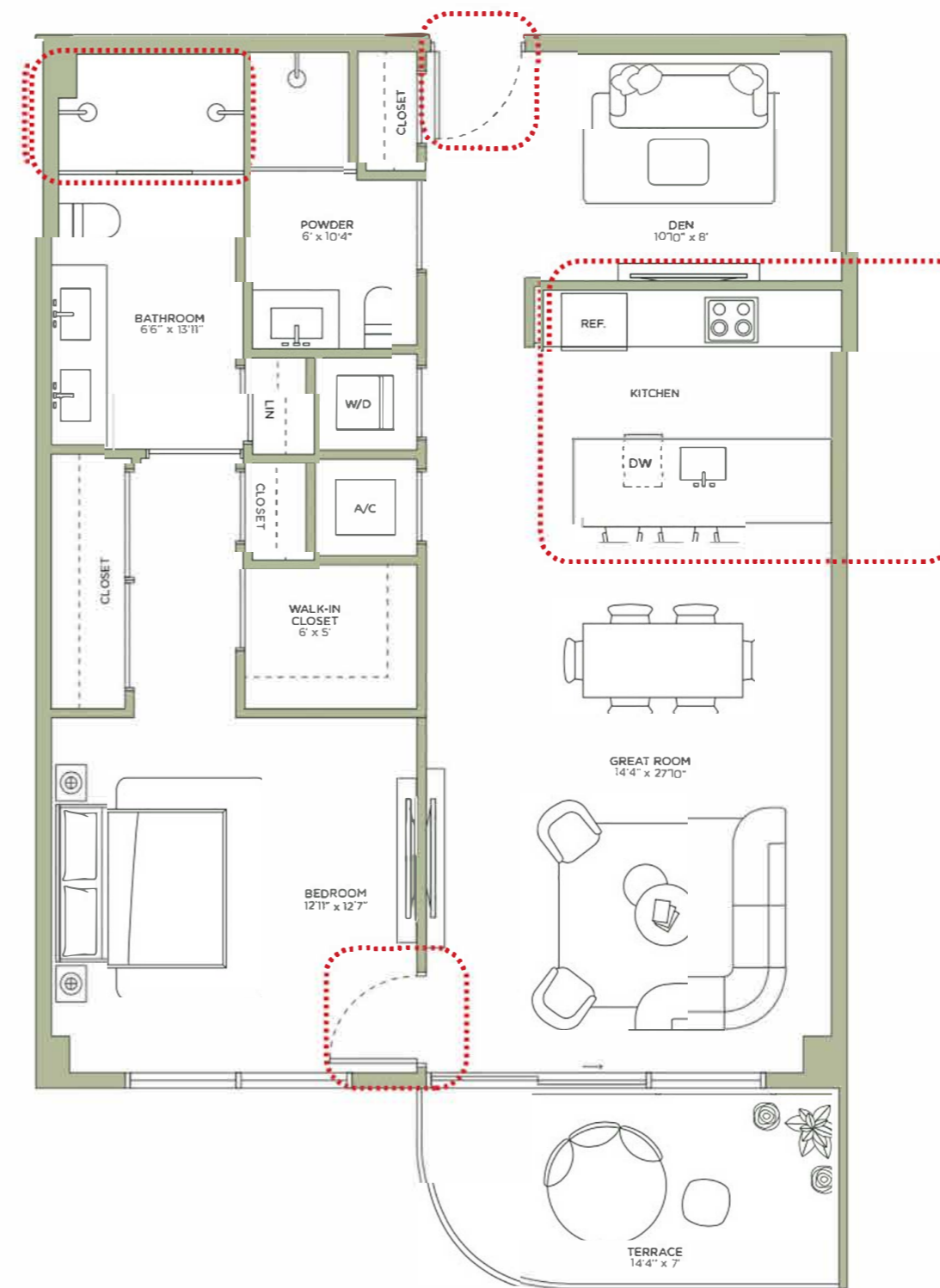
Residence 06

1 BEDROOM + DEN | 2 BATHROOMS

TOTAL	1,160 SQ FT 107 SQ M
INTERIOR	1,060 SQ FT 98 SQ M
EXTERIOR	100 SQ FT 9 SQ M



MIDTOWN PARK

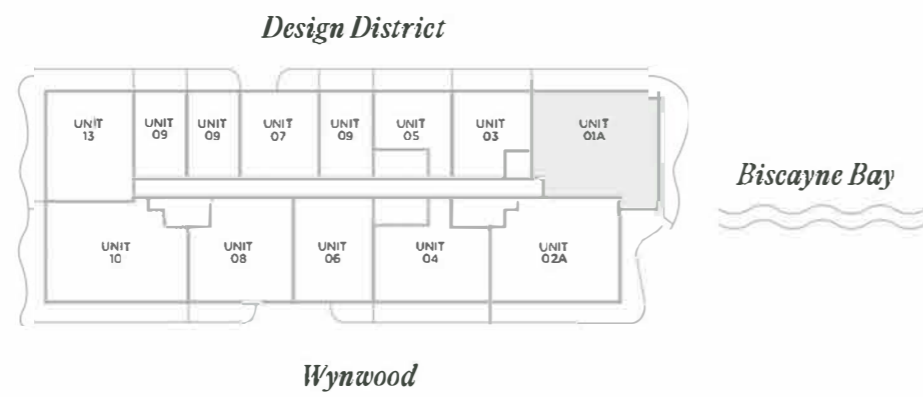


PH01

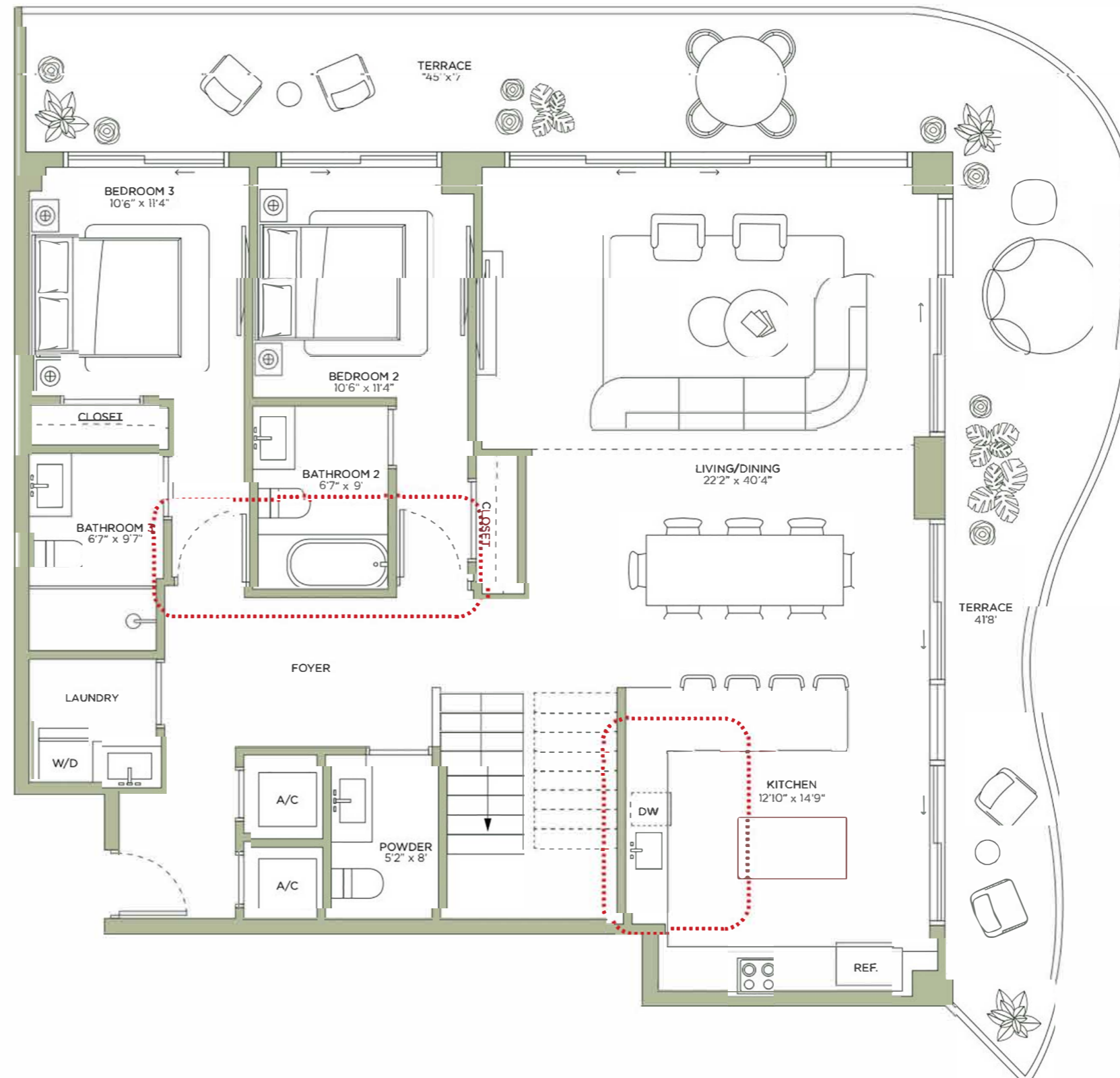
Lower Level

5 BEDROOMS + DEN | 5.5 BATHROOMS

TOTAL	2,360 SQ FT 219 SQ M
INTERIOR	1,730 SQ FT 161 SQ M
EXTERIOR	630 SQ FT 58 SQ M



MIDTOWN PARK

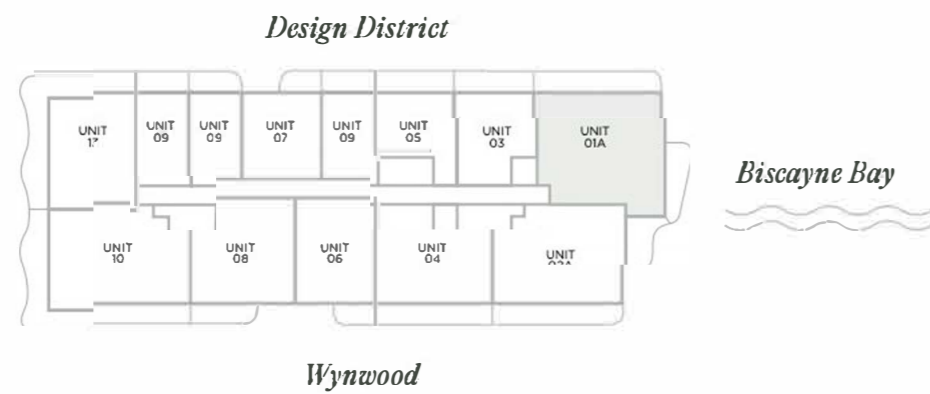
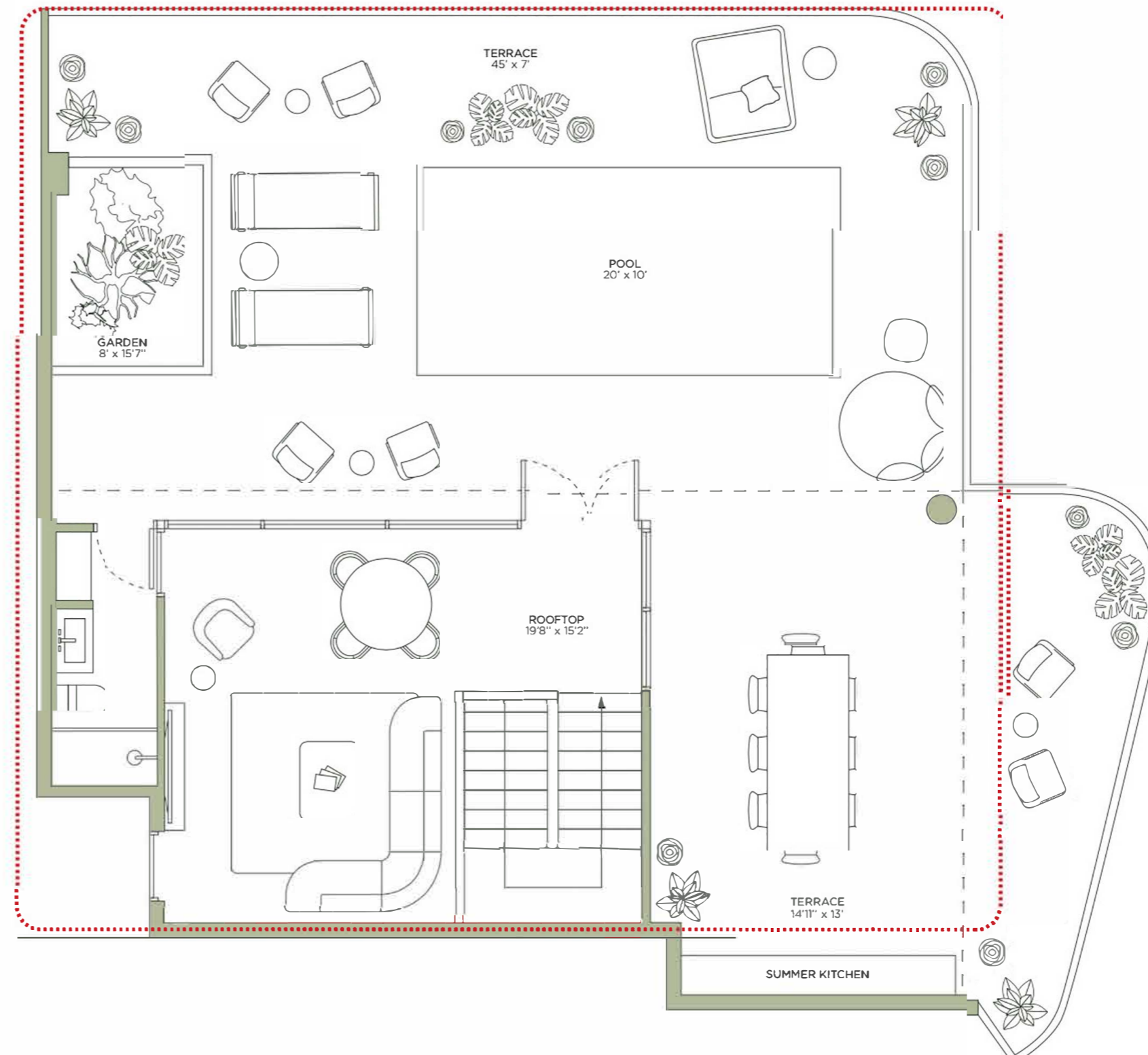


PH01

Roof Level

5 BEDROOMS + DEN | 5.5 BATHROOMS

TOTAL	1,714 SQ FT 159 SQ M
INTERIOR	435 SQ FT 40 SQ M
EXTERIOR	1,279 SQ FT 119 SQ M



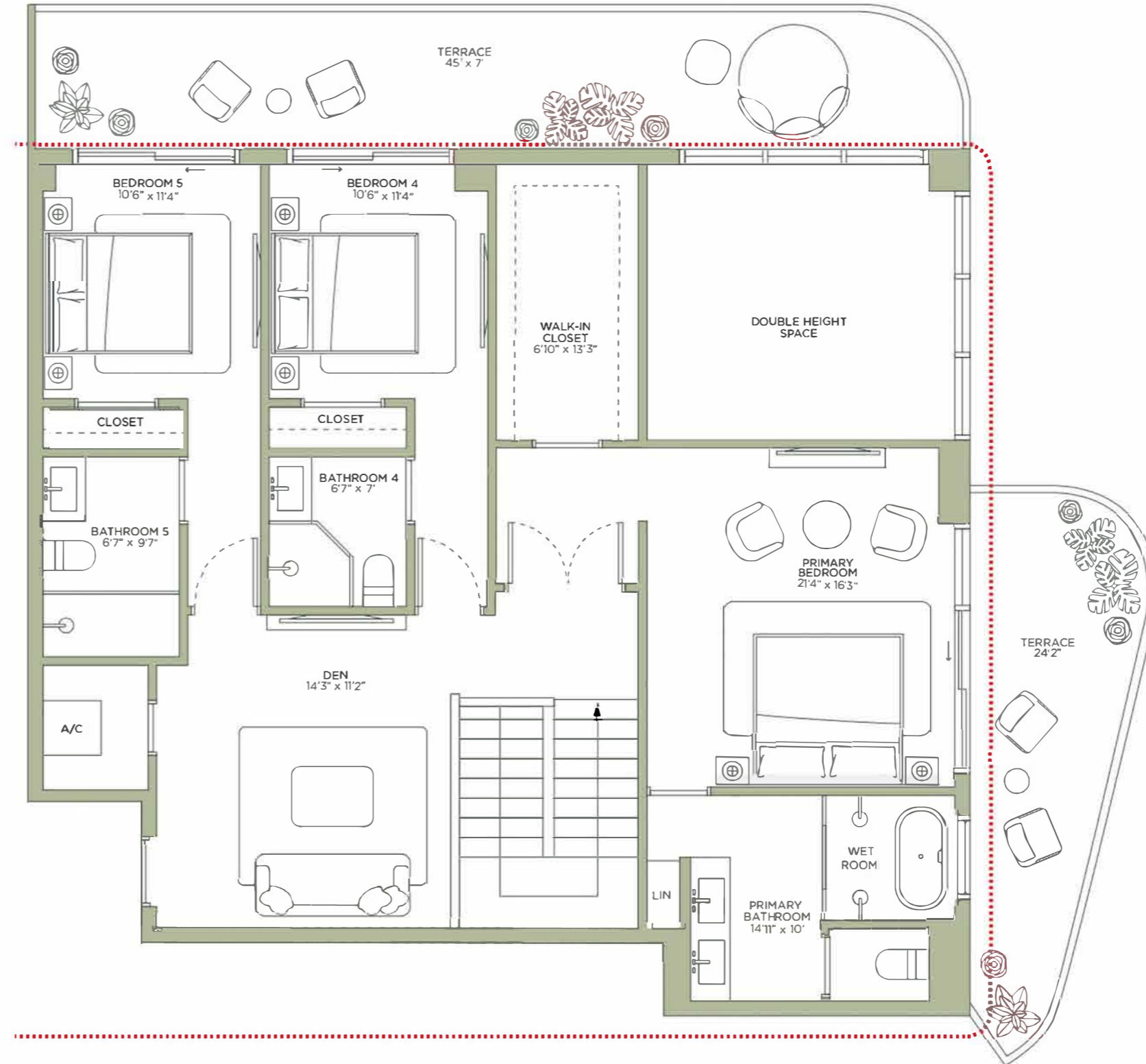
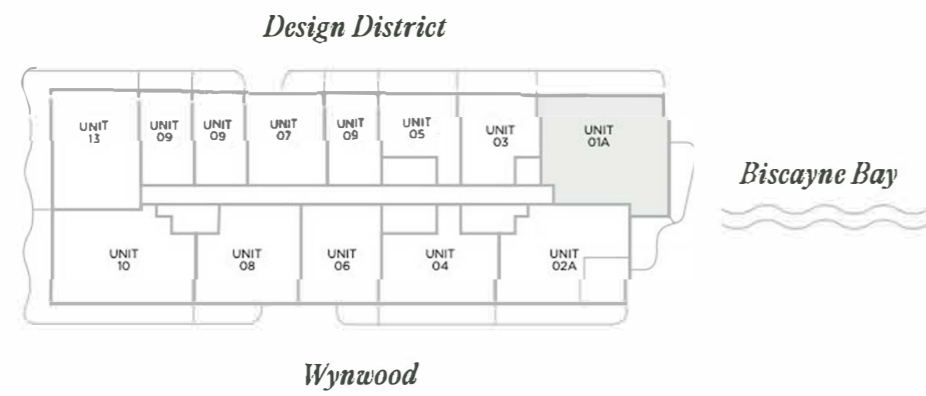
MIDTOWN PARK

PH01

Upper Level

5 BEDROOMS + DEN | 5.5 BATHROOMS

TOTAL	1,984 SQ FT 184 SQ M
INTERIOR	1,475 SQ FT 137 SQ M
EXTERIOR	509 SQ FT 47 SQ M



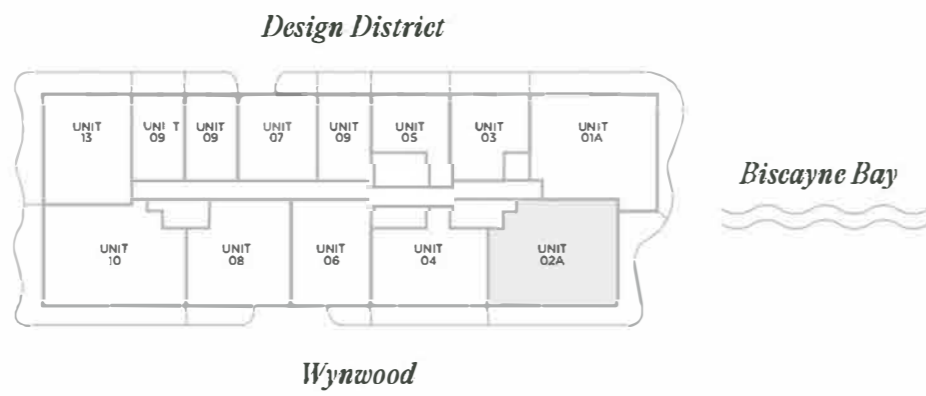
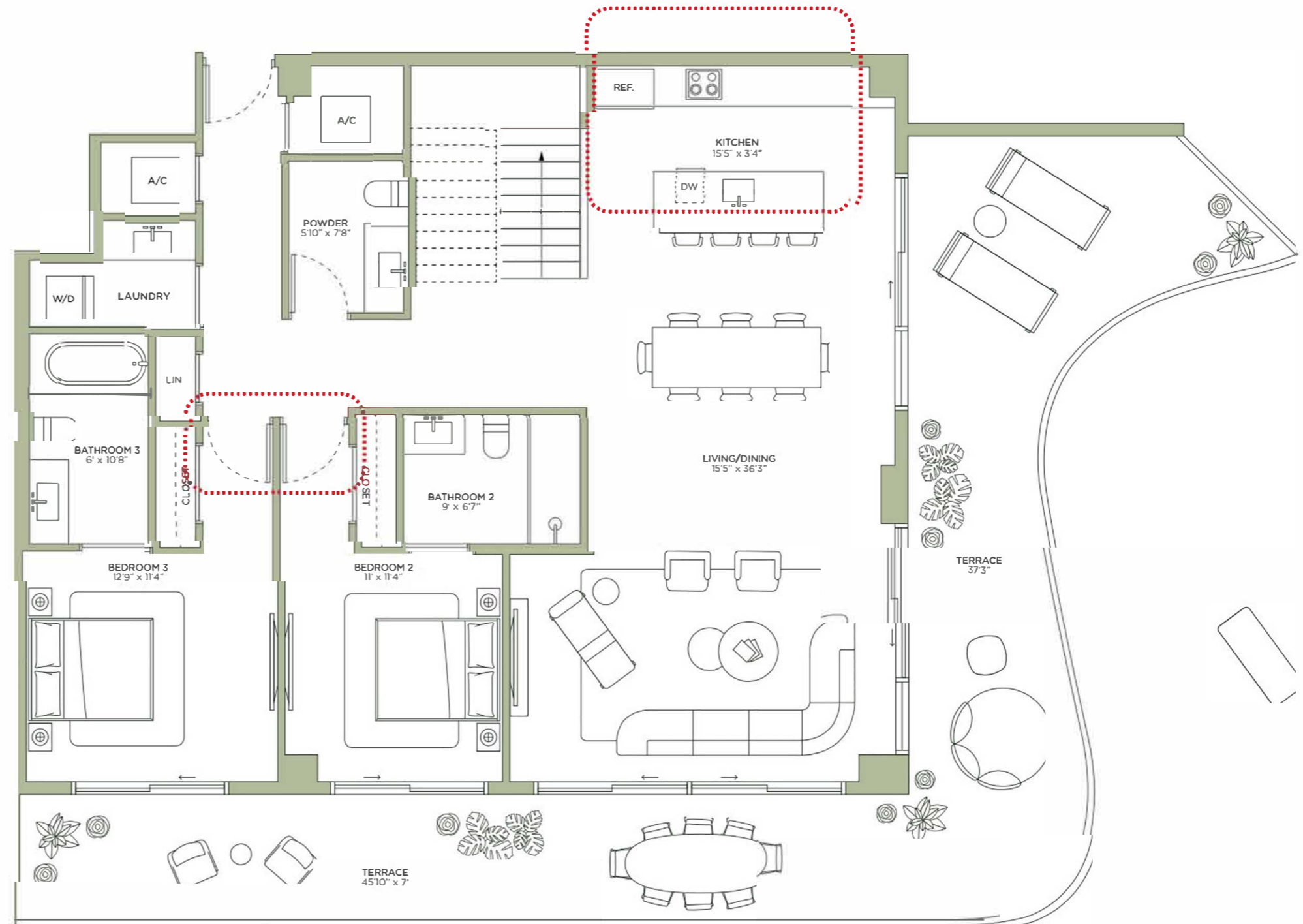
MIDTOWN PARK

PH02

Lower Level

4 BEDROOMS + DEN | 4.5 BATHROOMS

TOTAL	2,337 SQ FT 217 SQ M
INTERIOR	1,616 SQ FT 150 SQ M
EXTERIOR	721 SQ FT 67 SQ M



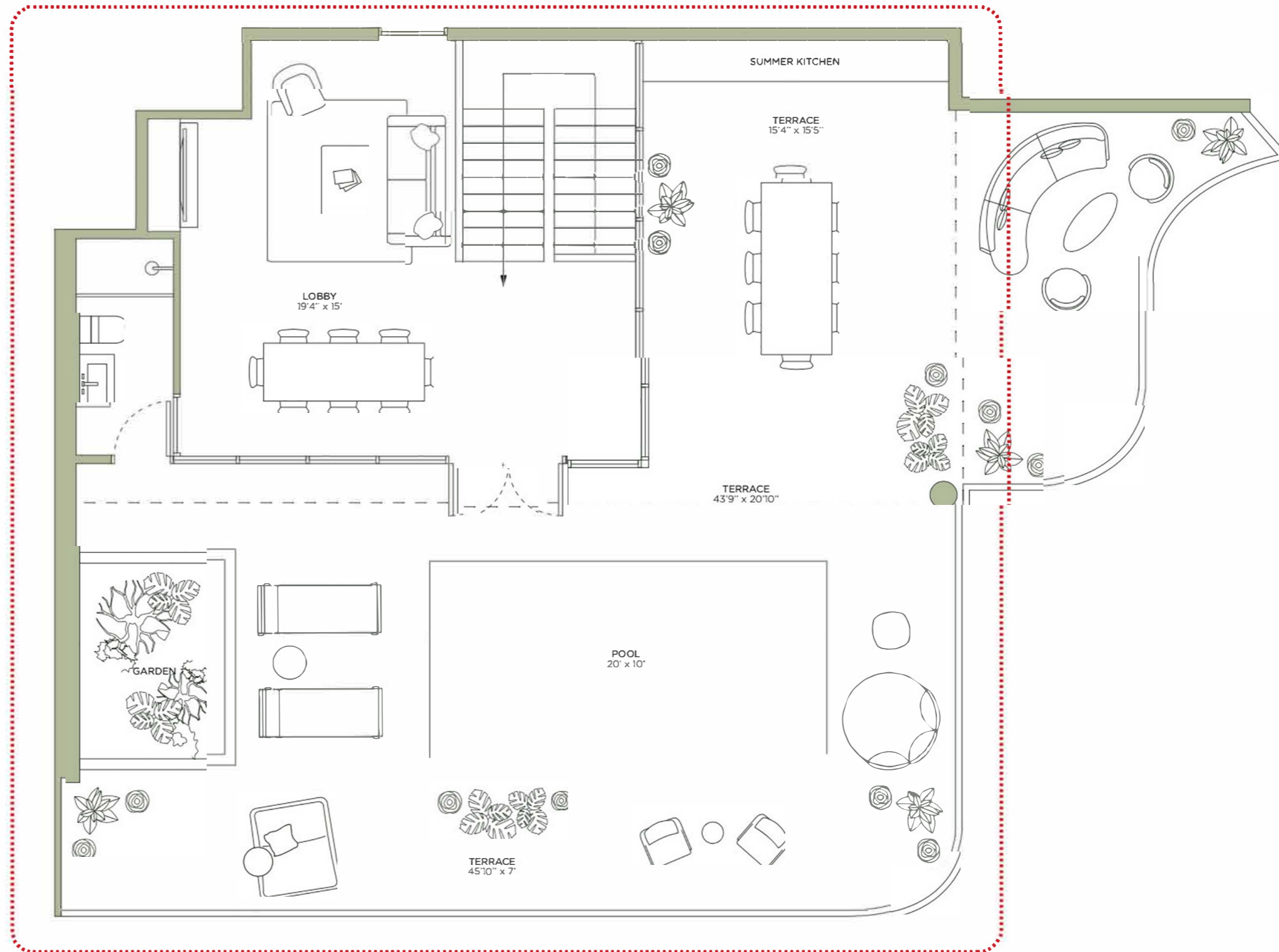
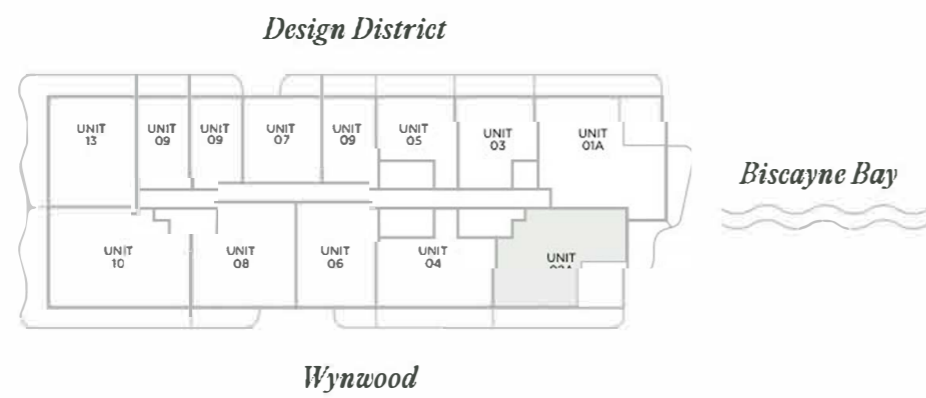
MIDTOWN PARK

PH02

Roof Level

4 BEDROOMS + DEN | 4.5 BATHROOMS

TOTAL	1,607 SQ FT 148 SQ M
INTERIOR	391 SQ FT 36 SQ M
EXTERIOR	1,216 SQ FT 112 SQ M



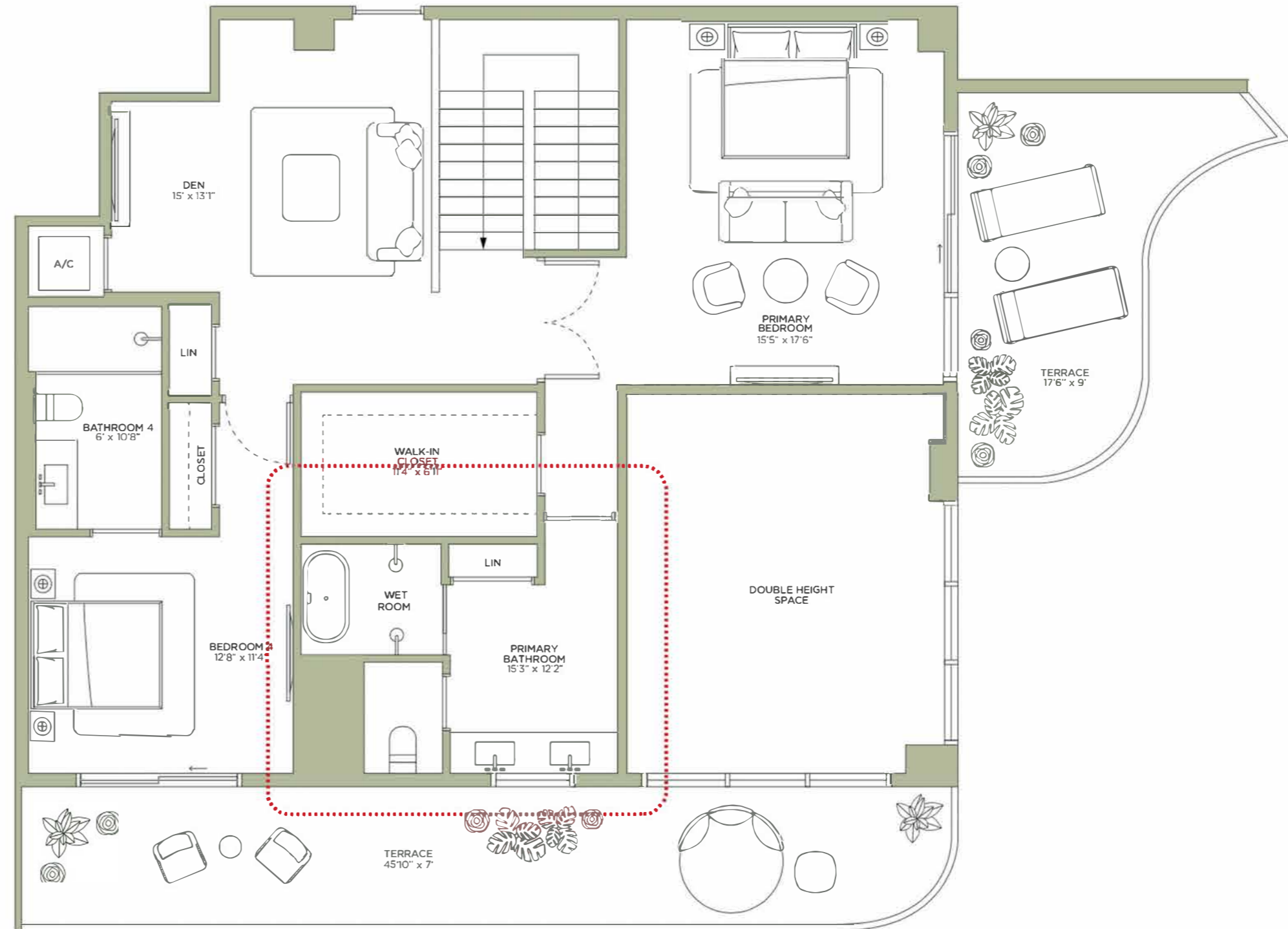
MIDTOWN PARK

PH02

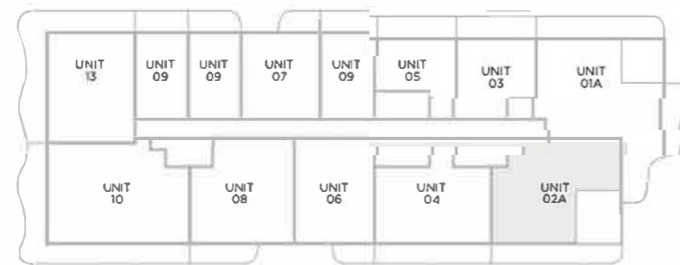
Upper Level

4 BEDROOMS + DEN | 4.5 BATHROOMS

TOTAL	1,913 SQ FT 169 SQ M
INTERIOR	1,380 SQ FT 120 SQ M
EXTERIOR	533 SQ FT 49 SQ M



Design District



Biscayne Bay

Wynwood

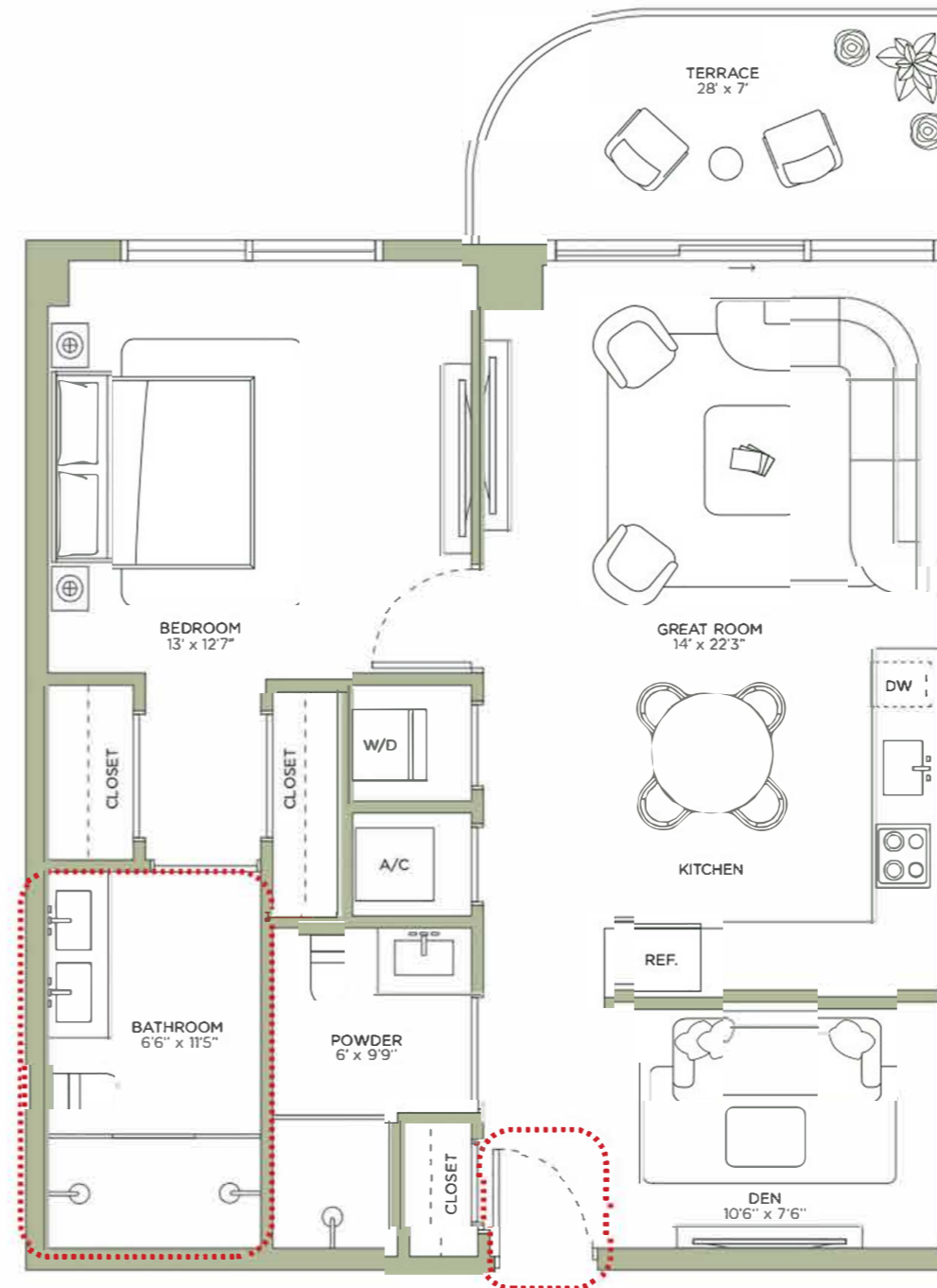
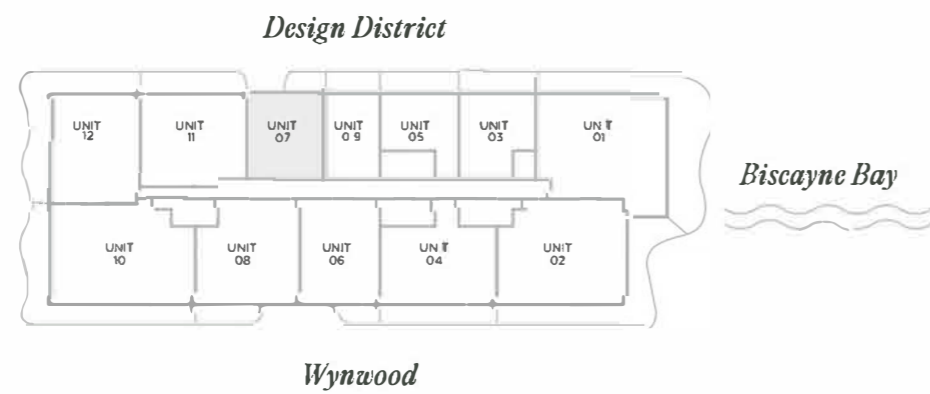


MIDTOWN PARK

Residence 07

1 BEDROOM + DEN | 2 BATHROOMS

TOTAL	981 SQ FT 91 SQ M
INTERIOR	883 SQ FT 82 SQ M
EXTERIOR	98 SQ FT 9 SQ M

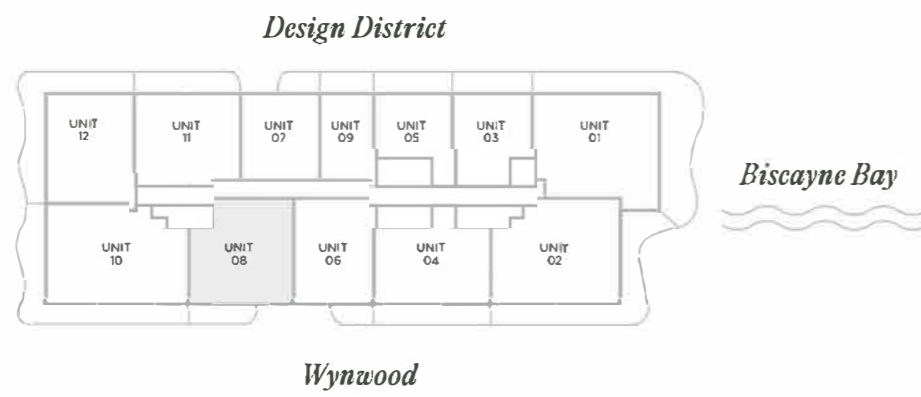
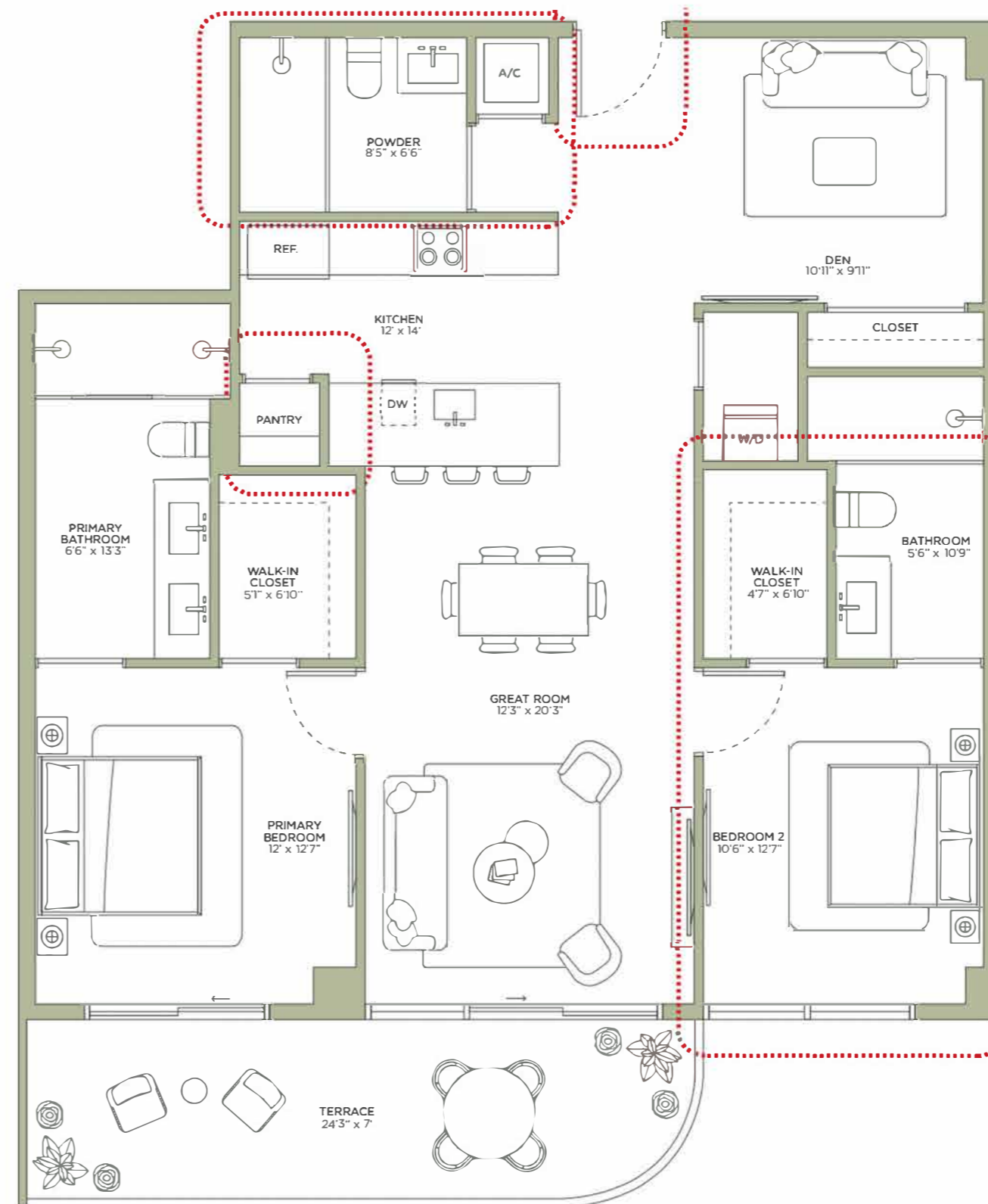


MIDTOWN PARK

Residence 08

2 BEDROOMS + DEN | 3 BATHROOMS

TOTAL	1453 SQ FT 135 SQ M
INTERIOR	1275 SQ FT 119 SQ M
EXTERIOR	178 SQ FT 16 SQ M

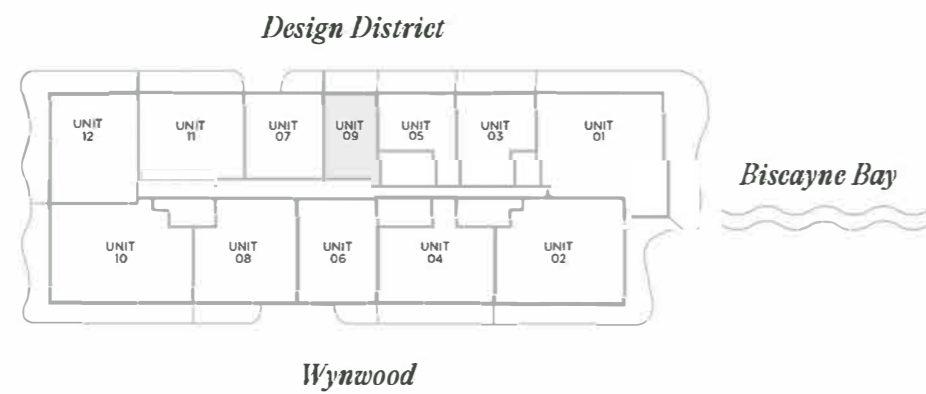


MIDTOWN PARK

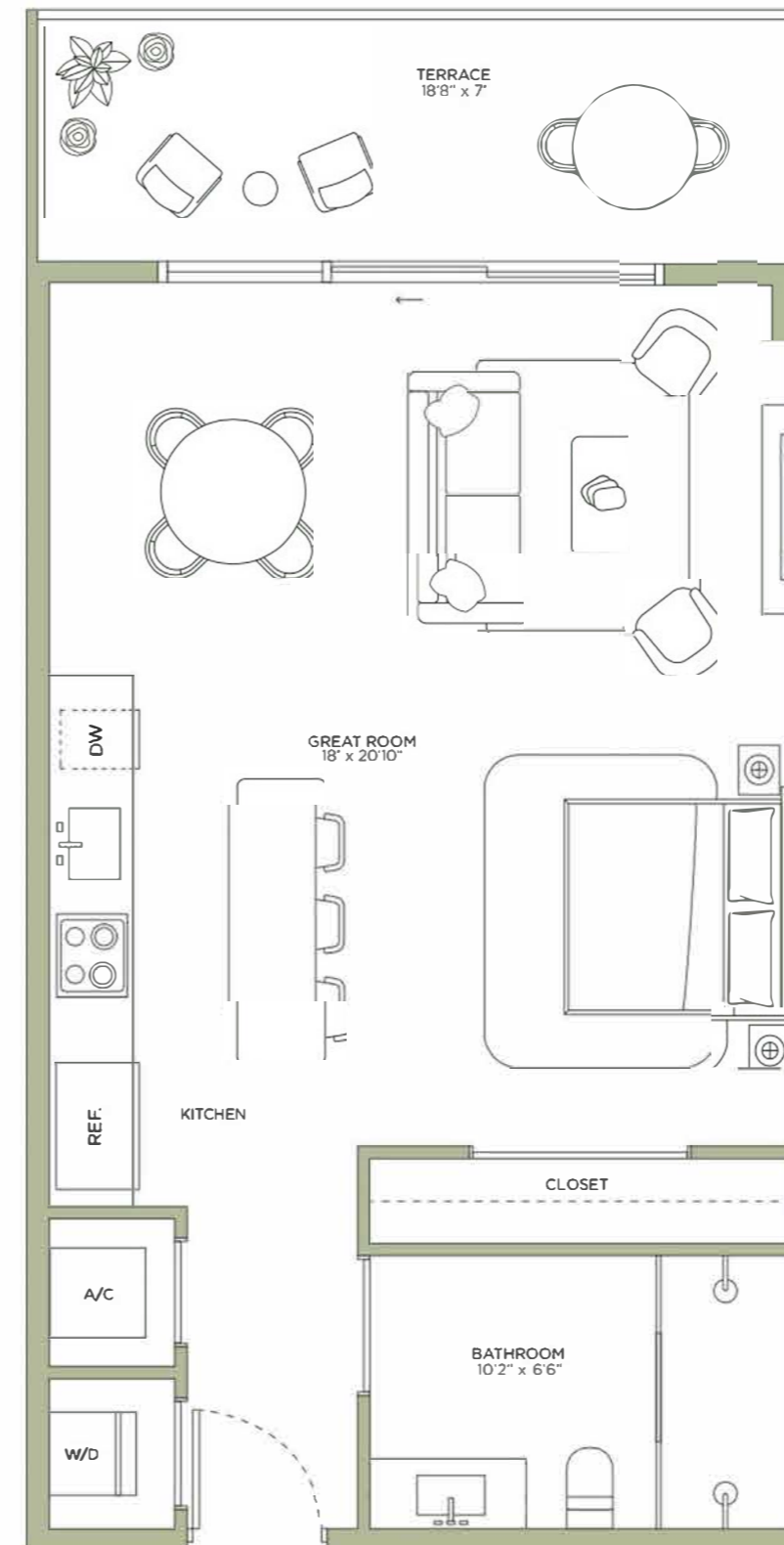
Residence 09

1 BEDROOM | 1 BATHROOM

TOTAL	718 SQ FT 77 SQ M
INTERIOR	588 SQ FT 55 SQ M
EXTERIOR	130 SQ FT 12 SQ M



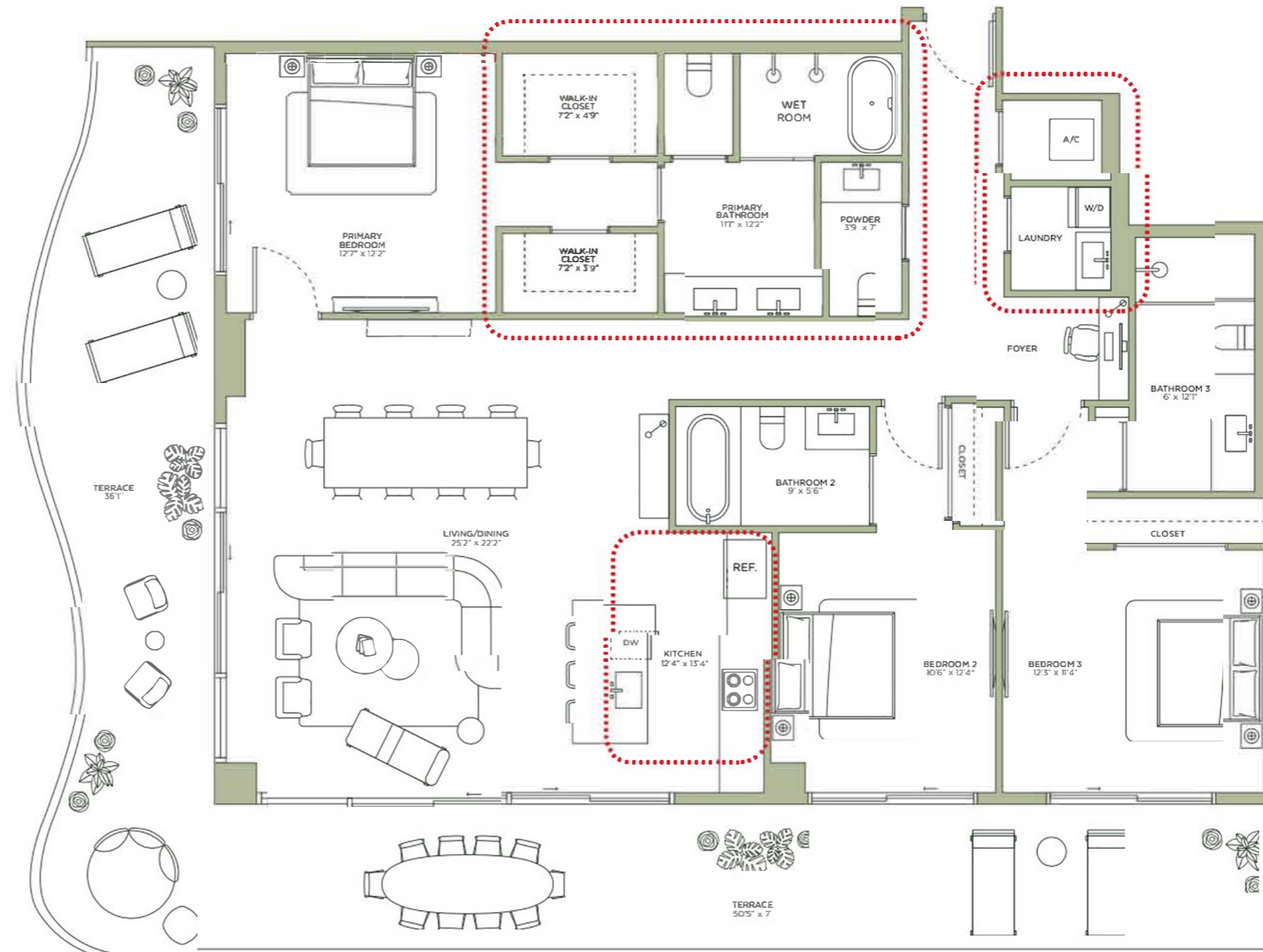
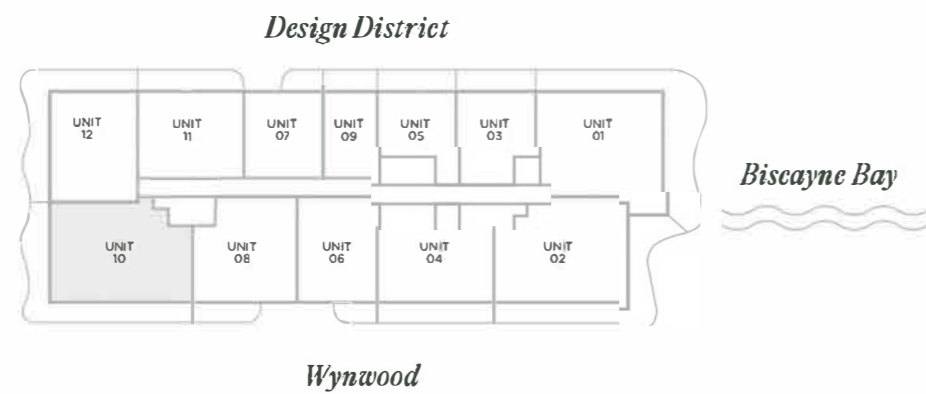
MIDTOWN PARK



Residence 10

3 BEDROOMS | 3.5 BATHROOMS

TOTAL	2,385 SQ FT 221 SQ M
INTERIOR	1704 SQ FT 158 SQ M
EXTERIOR	681 SQ FT 63 SQ M

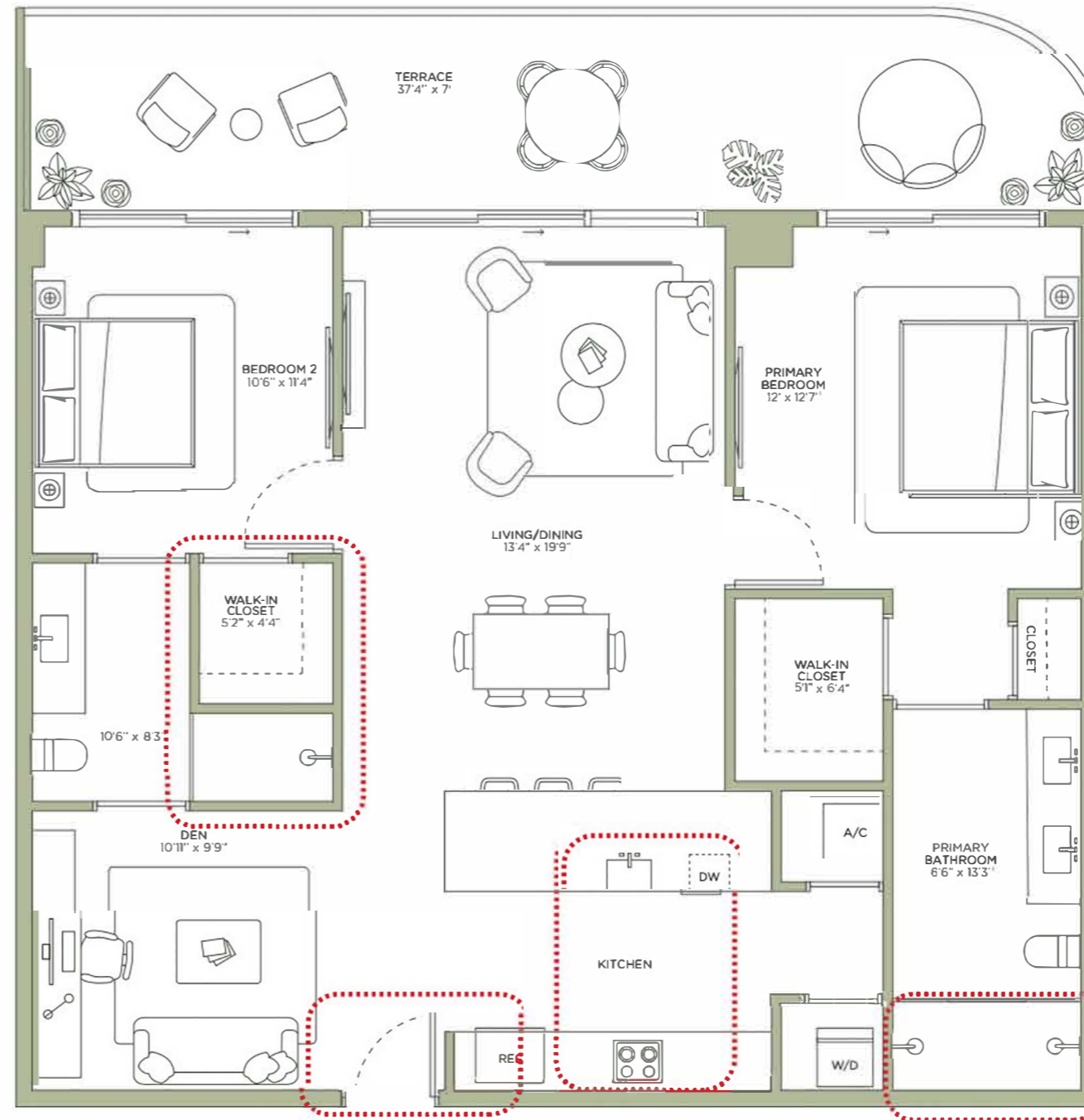
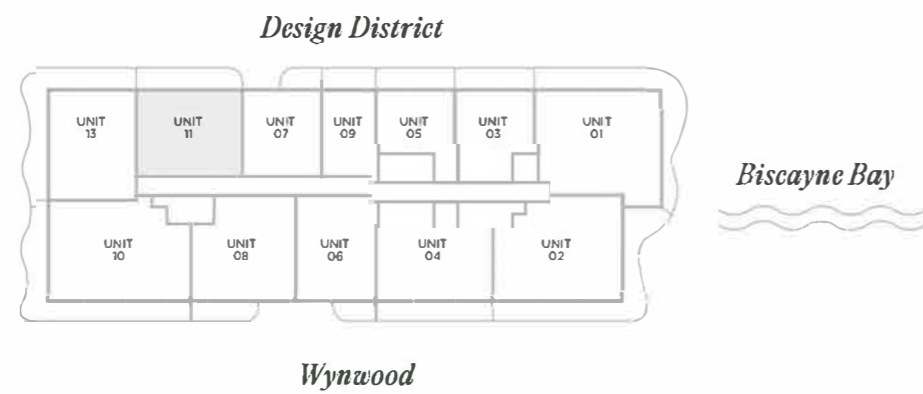


MIDTOWN PARK

Residence 11

2 BEDROOMS + DEN | 2 BATHROOMS

TOTAL	1,360 SQ FT 126 SQ M
INTERIOR	1,176 SQ FT 109 SQ M
EXTERIOR	184 SQ FT 17 SQ M



MIDTOWN PARK

Residence 12

3 BEDROOMS + DEN | 3.5 BATHROOMS

TOTAL	1,811 SQ FT 168 SQ M
INTERIOR	1,239 SQ FT 115 SQ M
EXTERIOR	572 SQ FT 53 SQ M

